

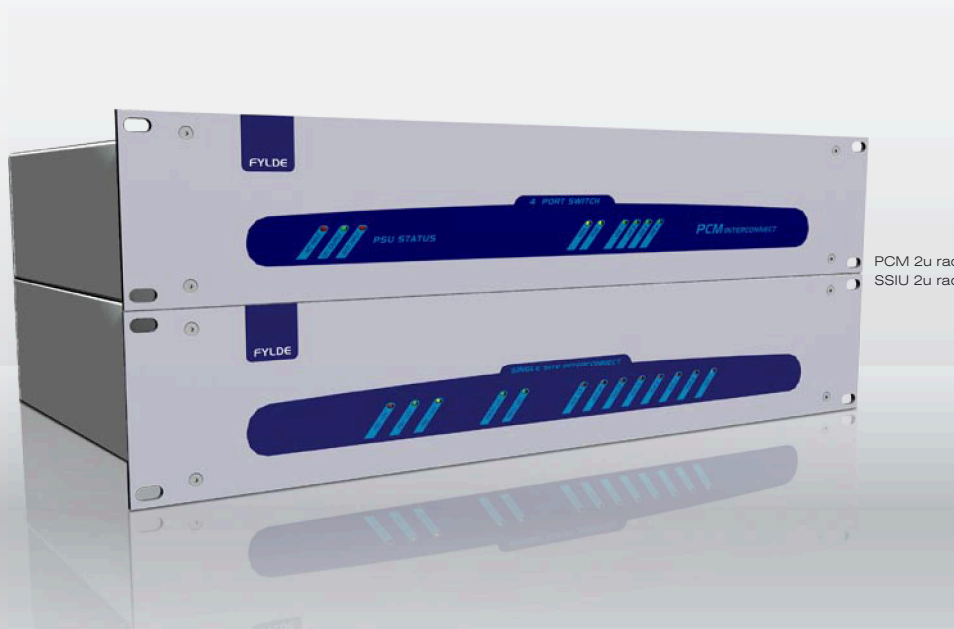
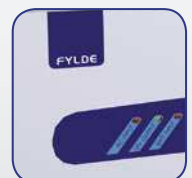


SSTAK - Single Site Interconnect

SSTAK is an SSIU and 2U PCM switch combination making a cost-effective solution for telephone and data connection on single site systems.



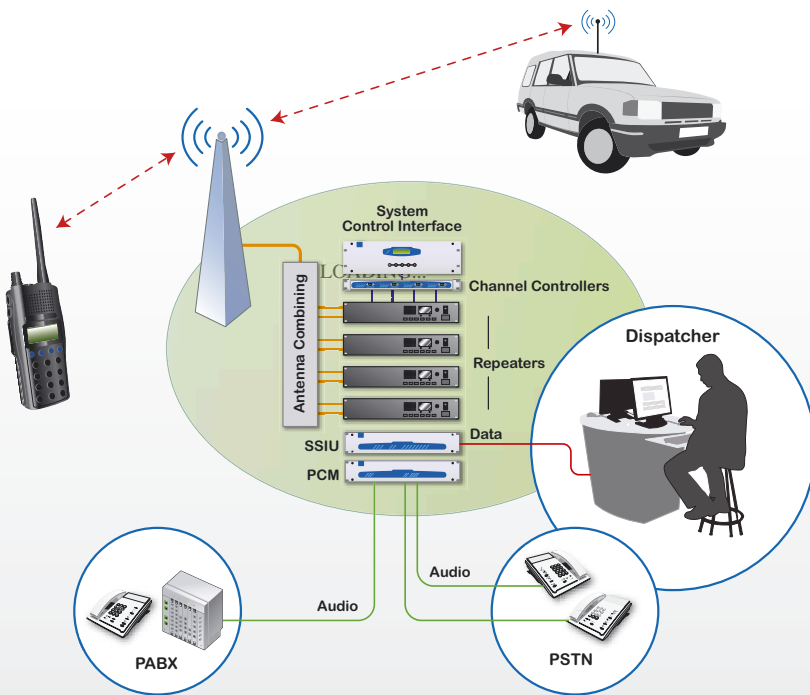
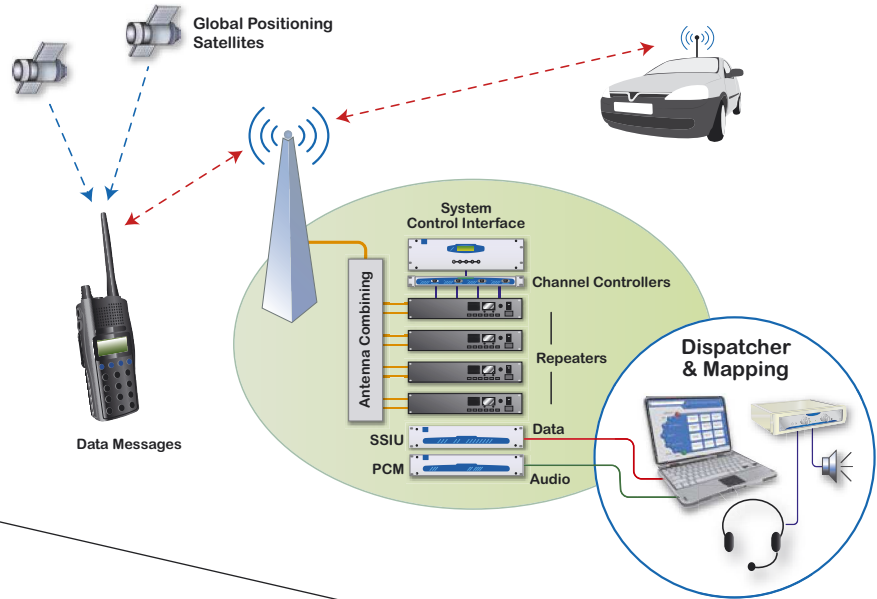
The SSTAK allows for connection of a site to the PSTN or PABX networks. The SSTAK combination also enables expansion to connect Message Handling Dispatcher (MHD), Vehicle & personnel tracking (AVL) as well as the system control terminal (SYSCON).



PCM 2u rack chassis
 SSIU 2u rack chassis

FYLDE MICRO
OFFICIAL DEALER

Each PCM 4 port card offers 4 private circuit connections or 2 PABX / PSTN and 2 private circuit connections. Each port is presented on a standard RJ45 socket.



This equipment complies with EN50082-1 & EN55022 also part 15 and 68 of the Federal Communications Commission (FCC) rules for the United States. It also complies with regulation ICES-009 and CS-03 of Industry Canada.

