

This fact sheet describes the system components and features of the TMC Automatic Vehicle Location (AVL) System.

The TMC SRM9000 series of radios have a GPS receiver accessory board that can be simply fitted to an existing radio. The SRM9000 has an integral modem as standard with a link control protocol.

This means that an AVL system can be assembled for use on a Private Mobile Radio (PMR) system or Trunked Mobile Radio (TMR) system such as Telstra Fleetcoms with relative simplicity.

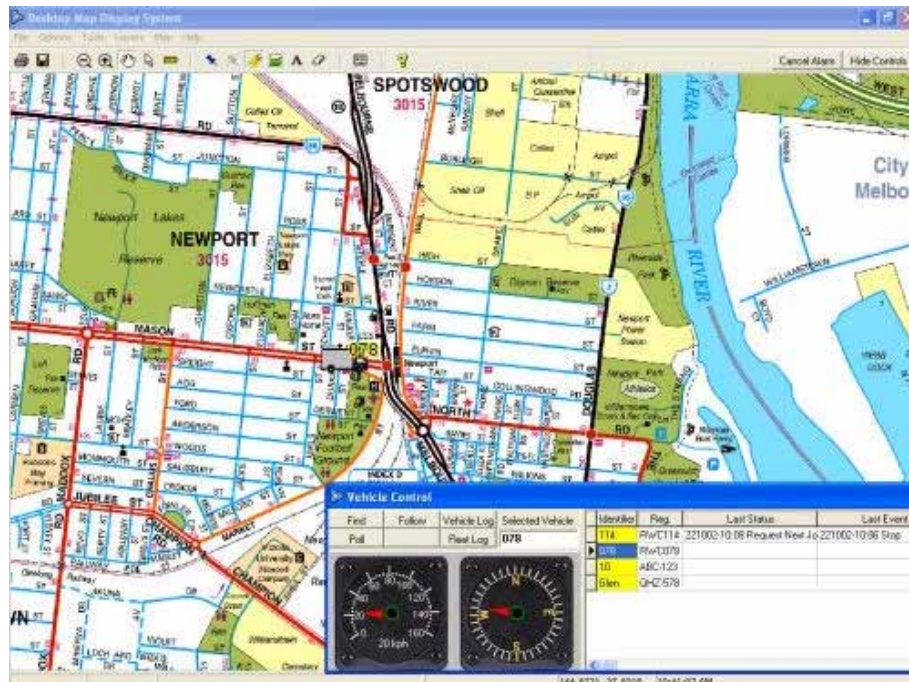
At the base end, a standard SRM9000 radio can either poll the radio for location reports or receive location reports that are generated autonomously by the radio at the end of an over or when a status message is sent.

The base PC connects to a Mapper application that runs on a Windows PC under Windows 2000 or later.

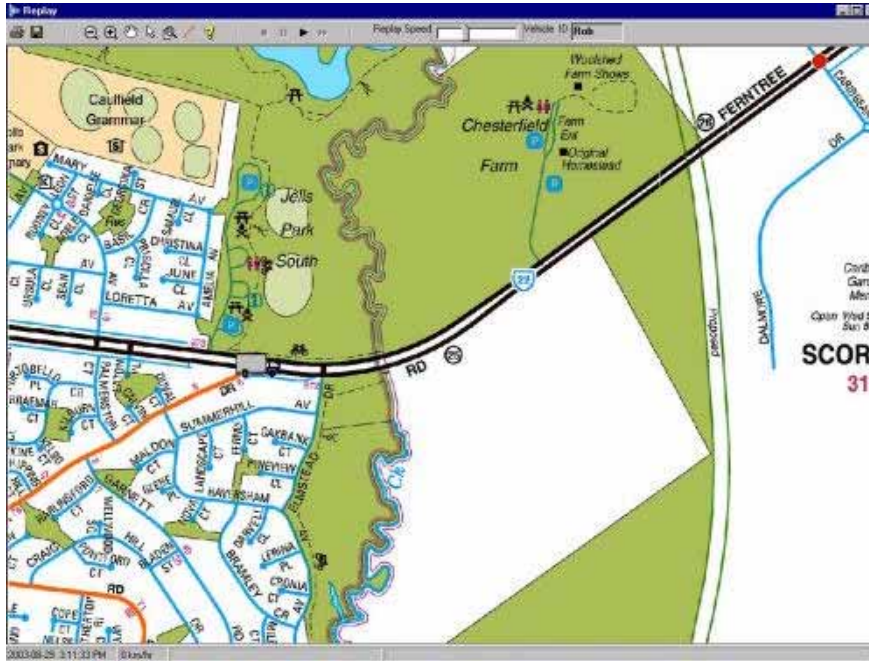
The Mapper application displays graphically, the location of vehicles in the fleet. Vehicles can be followed or searched. All location reports from vehicles are logged and can be replayed later or archived.

Change of status of vehicles can change the icon display or in the case of an emergency, sound an alert and focus the map on the distressed vehicle. Raster or Vector map formats are supported.

A comprehensive reporting package can generate reports based on vehicle events such as over speeding, stopping for extended times and status.



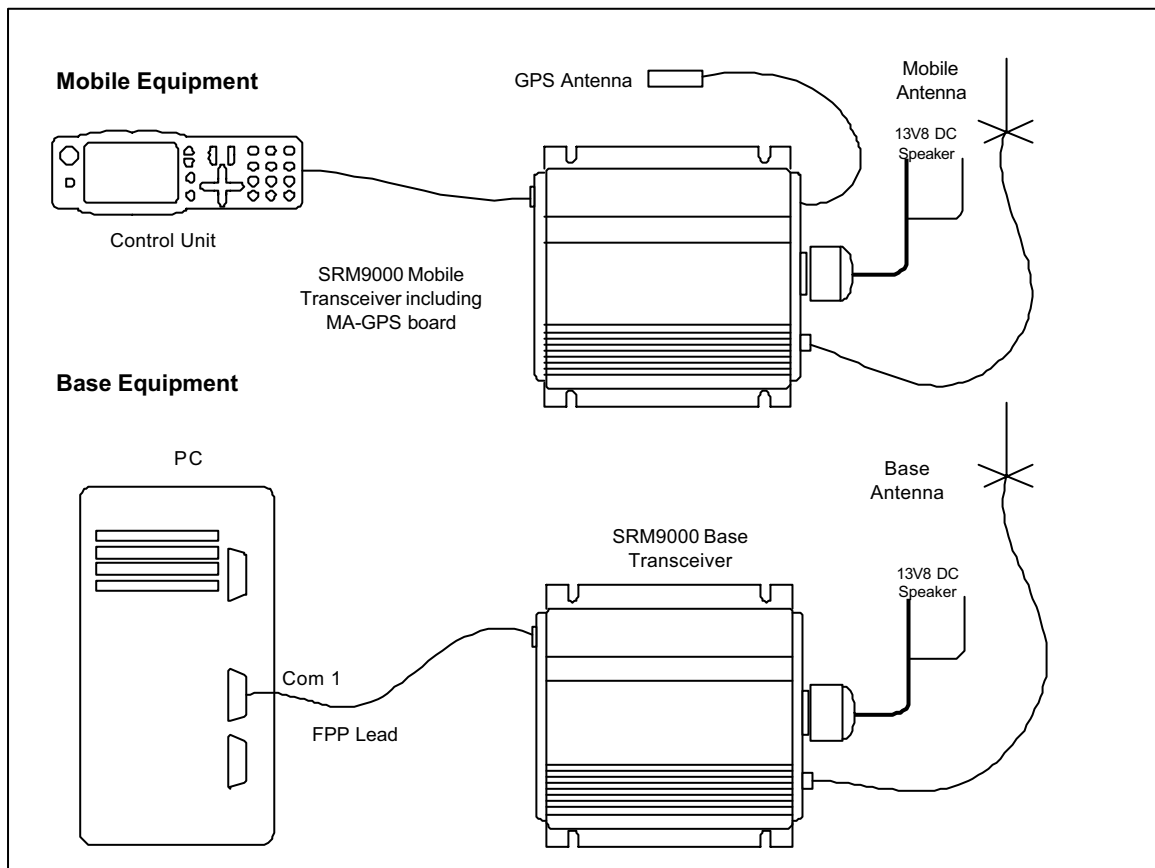
Typical Real Time Map display



Replay Screen

Features:

- Vehicle searchable on time/date range.
- Speed, Time, Date and Status shown for each plot.
- Trail mode.
- Variable replay speed.
- Print or save plot.
- Pause/Stop/Start plot.



Typical System Configuration for Small Fleets.

PC requirements:

PC Speed:	<i>Pentium Class, 1GHz Processor or better</i>
Memory:	<i>256 Meg Ram</i>
Disk:	<i>1Gbyte free</i>
Operating System:	<i>Windows 2000, Windows XP</i>
Interfaces:	<i>1 com port, SVGA video</i>

TNM-DS-E-0023 V1.1

13 October 2003